

# School Supply List

## Eagle Creek Elementary School

Kindergarten 2025/26 School Year



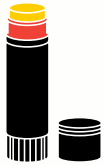
One Plastic 2-Pocket folder, labeled with the child's name



2 Wide ruled notebooks- any color



1 Pair of 5" Kids Scissors



12 Elmer's Glue Sticks- jumbo or regular



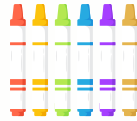
4 Cans of Play-Doh



24 Pre-sharpened Ticonderoga Pencils



1 Pack of Crayola 24 count Twistable Crayons



1 Pack of Crayola Thin Line Classic Markers - 10 count



2 Packs of Crayola Broad Line Classic Markers- 10 count



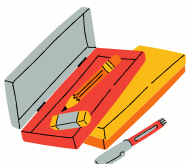
8 low odor black EXPO dry erase markers



One 1/2" 3-Ring Binder



1 Large backpack



One 8 3/8 x 5 5/8 x 2 1/8 Sterilite Pencil Box



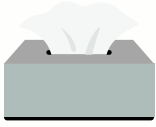
1 Oversized used t-shirt for messy play during art

Thanks to our generous community partners, various donations are made to the district specifically for our families that can benefit students of all ages. Donated supplies are available for those in need on a first-come, first-served basis (while supplies last) at the Welcome Center, during Connect & Assess and via Cultural Family Liaisons and Social Workers.

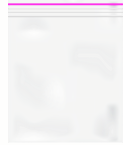
# School Supply List

## Eagle Creek Elementary School

Kindergarten 2025/26 School Year



**LAST NAMES STARTING WITH A-E:**  
Kleenex



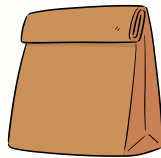
**LAST NAMES STARTING WITH F-J:**  
Ziploc Sandwich Bags



**LAST NAMES STARTING WITH K-O:**  
Ziploc Gallon Bags



**LAST NAMES STARTING WITH P-T:**  
Antibacterial Wipes



**LAST NAMES STARTING WITH U-Z:**  
Brown Paper Lunch Bags



Headphones with cord

### Community Supply Donations

- ☐ Mr. Sketch Markers
- ☐ Crayola Silly Scents
- ☐ Multi-Color Pens/Flair
- ☐ Individually Wrapped Snacks
- ☐ Mini Sticker Sheets
- ☐ PipSqueak Markers
- ☐ Elmer's Glue Bottles
- ☐ Paper Plates
- ☐ 16 oz Plastic Cups
- ☐ Kleenex Boxes

*Thanks to our generous community partners, various donations are made to the district specifically for our families that can benefit students of all ages. Donated supplies are available for those in need on a first-come, first-served basis (while supplies last) at the Welcome Center, during Connect & Assess and via Cultural Family Liaisons and Social Workers.*